



Aon Cyber Solutions

Cyber Resilience: Isn't that an IT Problem?

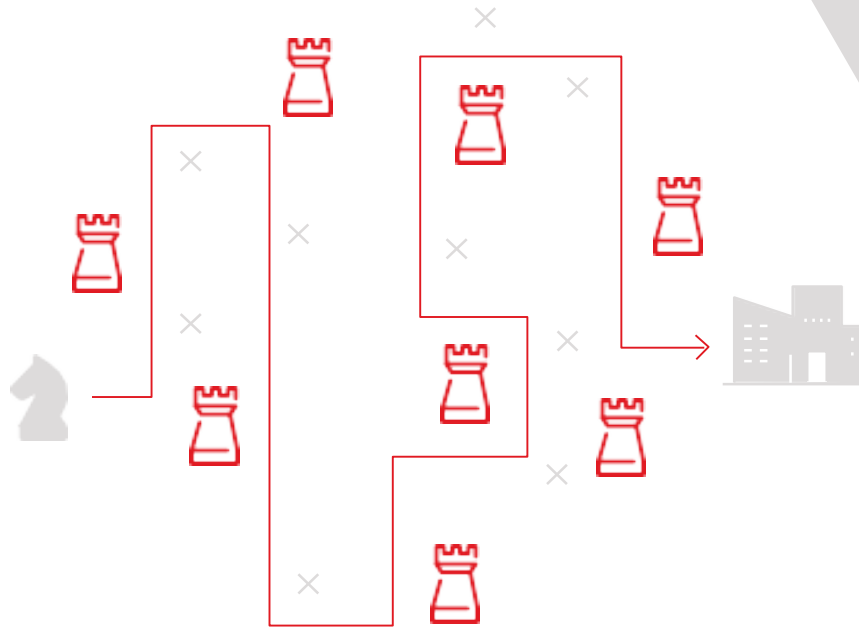
Asian Wealth Management Forum 2018

January 2018



Cyber Risk is Enterprise Risk

A Security Problem



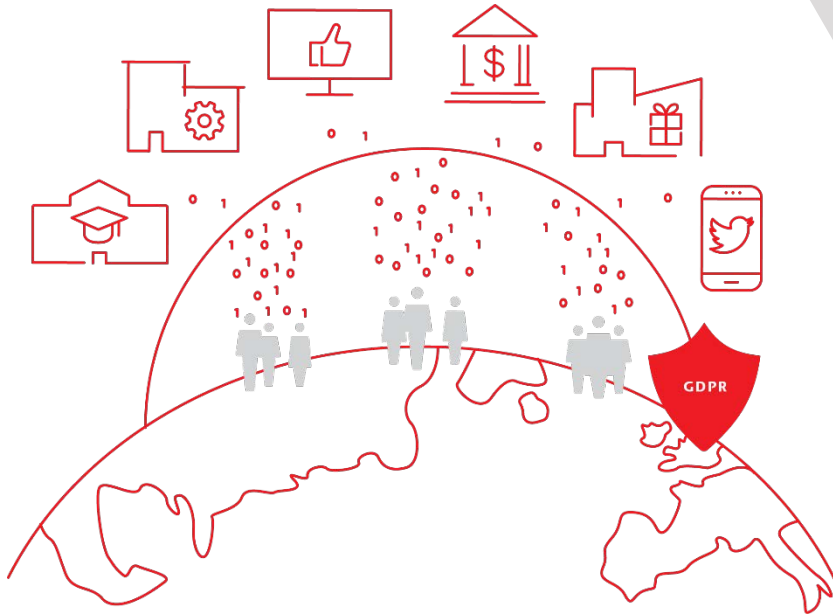
Criminals look to attack businesses embracing the IoT

Success of ransomware attacks in 2017 likely to drive more large scale attacks

Traditional methods refined and deployed, meaning the employee remains the weakest link or strongest asset

A Legal Problem

In 2018: Regulatory spotlight widens and becomes more complex, provoking calls for harmonization. The EU will hold companies to account over GDPR violation. Regulators in Asia will continue to take steps to align with global standards.

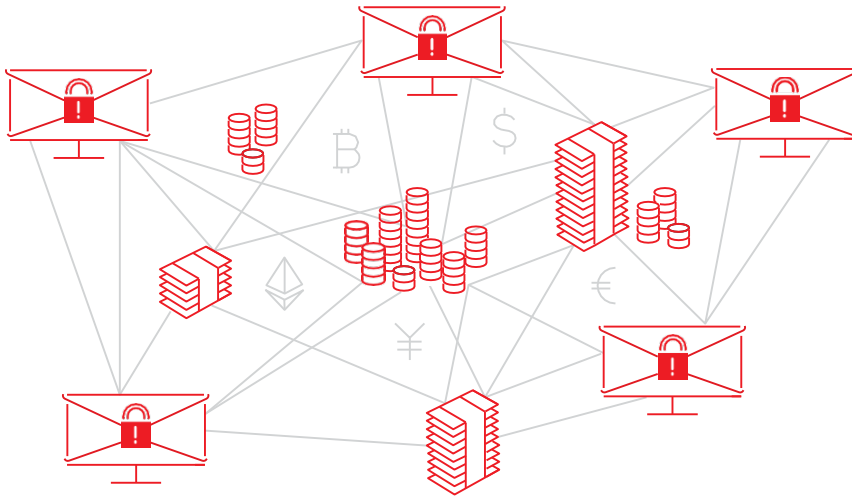


A Finance Problem

Average cost per compromised record: \$141

Maximum GDPR Penalty: 4% of global turnover or 20 million euros

Major business interruption losses between \$50m - \$300m

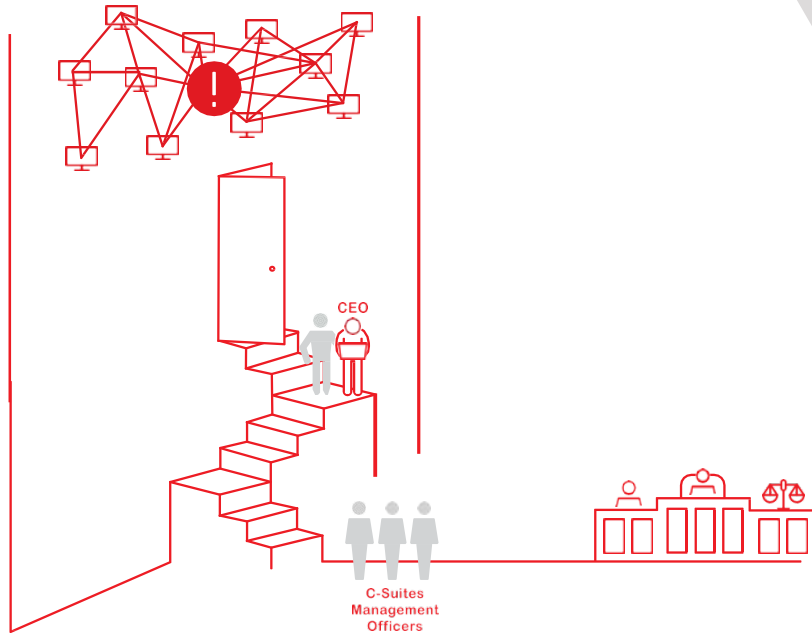


A Board Problem

Class actions have begun, thus far unsuccessful

Equifax and Uber breaches could be game-changers

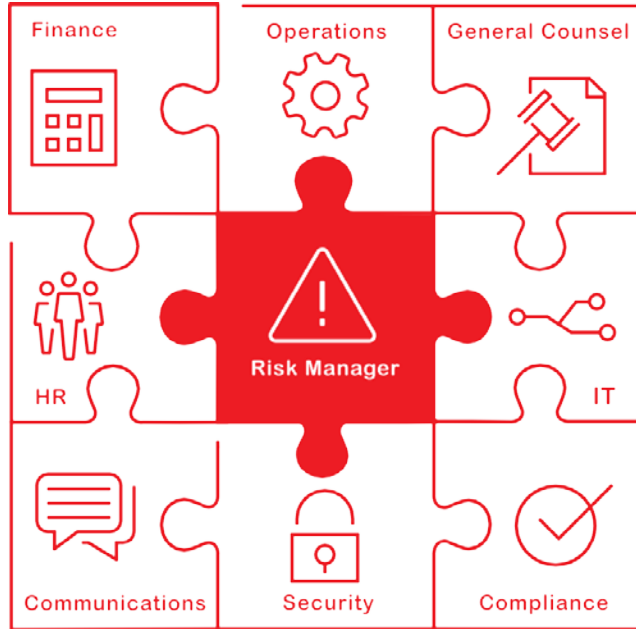
D & O policies maintain coverage



A Risk Problem

As the physical and cyber worlds collide, chief risk officers take center stage to manage cyber as an enterprise risk.

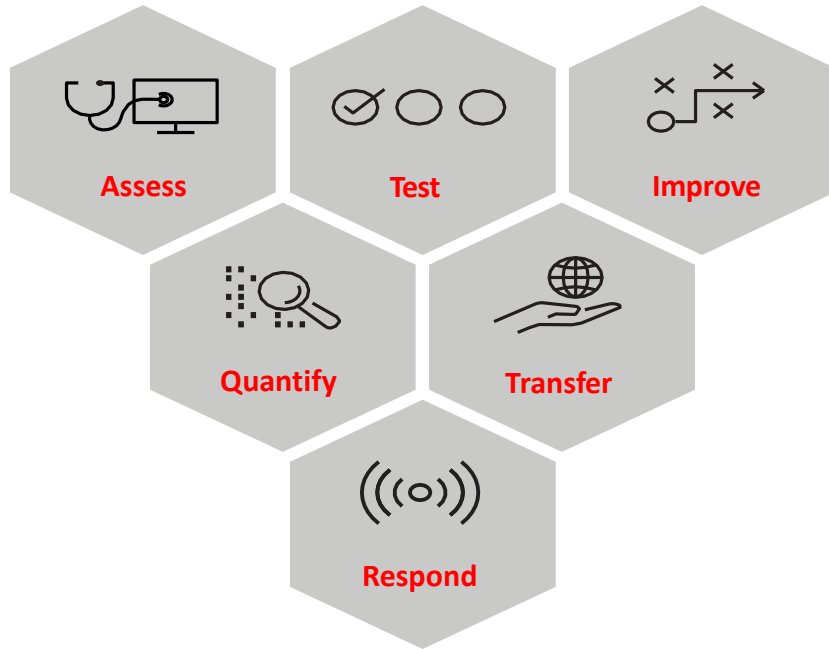
Risk managers must navigate gaps and potentially silent cover in existing policies and understand how a cyber insurance policy fits the organisation's risk profile





The Aon Cyber Resilience Framework

Aon Cyber Resilience Framework



Assess – Identify critical assets, pinpoint vulnerabilities and assess cyber preparedness

Services: *Cyber Gap Analysis*

Test – Uncover, test, and remediate application, network, and endpoint vulnerabilities

Services: *Red Team Testing, Penetration Testing*

Improve – enhance security governance and incident detection protocols

Services: *Cyber Threat Simulation*

Quantify – Model potential exposure, and remediation costs to optimize risk mitigation strategy

Services: *Cyber Impact Analysis*

Transfer – solutions to minimize balance sheet risk

Services: *Cyber Insurance*

Respond – investigate system breaches, minimize economic loss, and expedite the claims process

Services: *Expert Forensic Services*



© Aon plc 2018. All rights reserved.

No part of this report may be reproduced, stored in a retrieval system, or transmitted in any way or by any means, including photocopying or recording, without the written permission of the copyright holder, application for which should be addressed to the copyright holder.