



ETON
SOLUTIONS



Satyen Patel

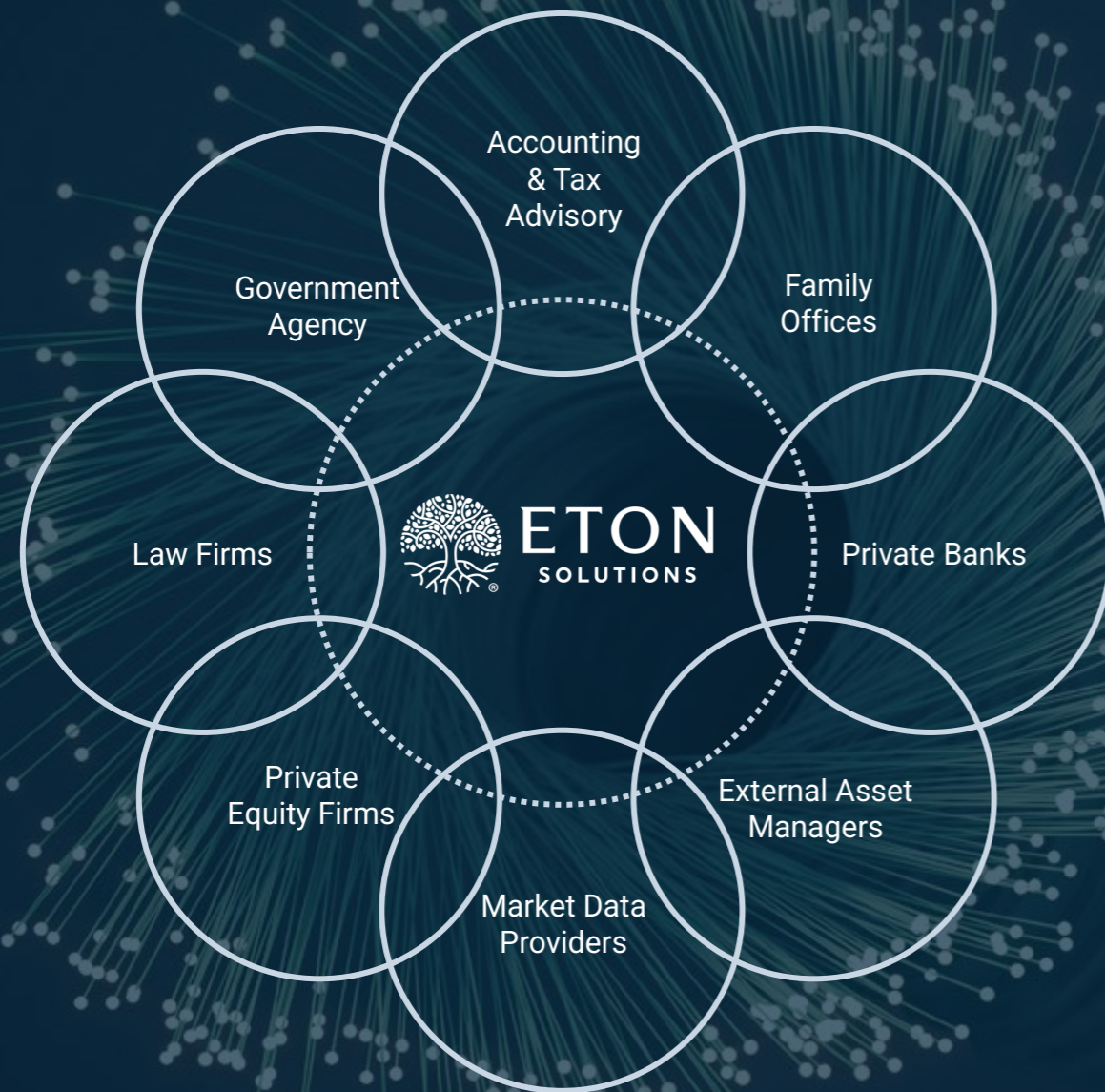
Executive Chairman



ETON
SOLUTIONS

Digital **transformation** for multi-generational **success**

Built by our Family Office, for your Family Office



Eton is committed to building an **inclusive marketplace** to help our partners **enrich and elevate** their service to family office clients



ETON
SOLUTIONS

“ We at Eton Solutions **are committed to serving Singapore’s fast-growing market,** by providing Singapore-based Family Offices a cutting-edge, friction-free, budget-friendly, fast-track **integrated solution and services.**”



Enable new Family Offices to operate with the efficiency of a \$1 Bn+ Family Office

GET A HEADSTART ON COST & OPERATIONAL EFFICIENCIES FROM DAY 1





ETON
SOLUTIONS



Bryan Henning

Head of International

Your digital family office powered by AtlasFive®

Privacy | Security | Control



Challenges of Family Offices

Family Offices face numerous challenges across their lifecycle.

At the heart of this lies the issue of governance. **How can a family office better govern its operations and investments across entities to better achieve their goals?**



Initiation & Setup

- Lack of knowledge to start a family office
- Family office application process and paperwork
- Recruitment of staff
- Initial infrastructure setup
- Compliance to government regulation
- Finding a suitable bank or asset manager
- Finding a suitable vendor for external services (*legal / accounting / tax support etc.*)



Day to day governance

- Ongoing fulfilment of regulatory requirements
- Management of vendors and partners
- Staff management and hiring
- Manual data consolidation from multiple banks
- Data gathering for accounting and tax reporting
- Managing complex instruments (*e.g., Private Equity Lifecycle*)
- Clarify and control over total costs
- Payments and cash management

Operational inefficiency is preventing the traditional Family Office from realizing its full purpose and potential

Typical Family Office setup (100 – 250M AuM)

CEO & Investor Board

Investment

CIO

Portfolio manager/
analyst/traders

Accounting

CFO

Accounting &
Tax analyst

Operations

COO

Multiple vendors, 5-6 private banks and outsourced services

Inefficiencies in typical setup



Average
~3-5 FTEs



1-1.5M
operating cost



~50% time spent
on manual tasks

Front Office

20%
of mind-share

Strategy and
Governance

Succession
planning

Social
Impact

Wealth
Management

Trust
Accounting

Performance
Reporting

Transaction
Processing

GL Accounting

IT
Infrastructure

Cybersecurity

Asset setup and
maintenance

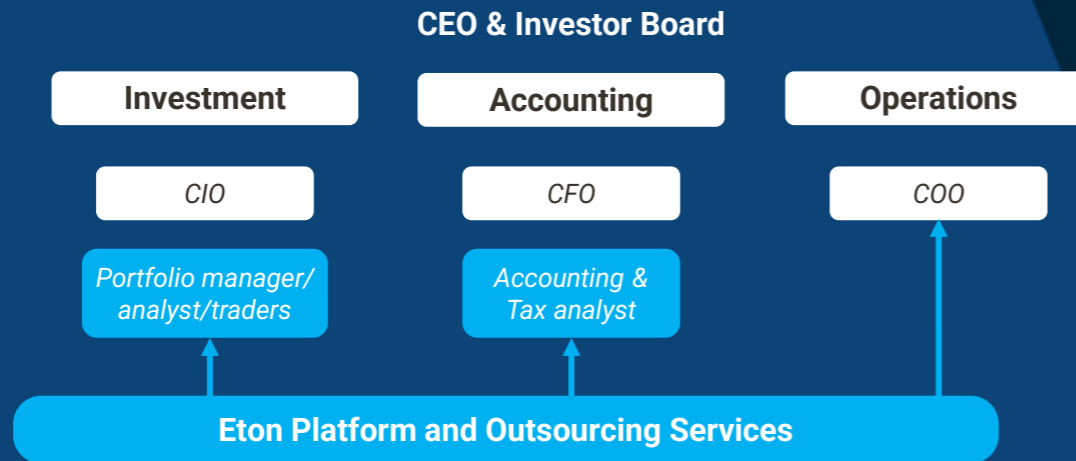
Data
Management

Administrative Functions

80%
of mind-share

We enable customers to focus on higher-value tasks to achieve their goals while we handle their operational needs

Delivering impact to Family Offices globally in all aspects



Our clients will achieve greater efficiency and cost savings

-  Augment staff with platform & services
-  ≤50% decrease in operating cost
-  Automated, real time data feeds

Front Office

You can focus on the activities that matter the most

- Strategy and Governance
- Succession planning
- Social Impact
- Wealth Management

Administrative Functions

Eton's AFO empowers your family office



Experience Eton Solutions Administrative Family Office (AFO)



AtlasFive® Proprietary Platform

Democratizing access to the
technology being used by institutional
family offices



Eton Services Suite

Providing top-notch Middle and Back
Office Services to enhance efficiency
and operating leverage



Bringing together a cutting-edge platform and top-notch services to significantly transform
Family Office operations

01

Family-level governance

Institutionalize family objectives and comply to regulatory requirements

02

Full control at your fingertips

Initiate, authorize and manage all tasks and operations

03

Total visibility & risk management

Capture family total net worth for risk mgmt & market opportunities

04

Seamlessly manage complex investments

Simplifying the entire Private Equity Lifecycle

05

Keep track of all your private assets

Centrally manage your private assets wherever you are

06

High quality, accurate and secure data infrastructure

Remove manual data mgmt efforts and simplify your data operations

01

Experience family-level governance

Institutionalize family objectives and comply with regulatory requirements



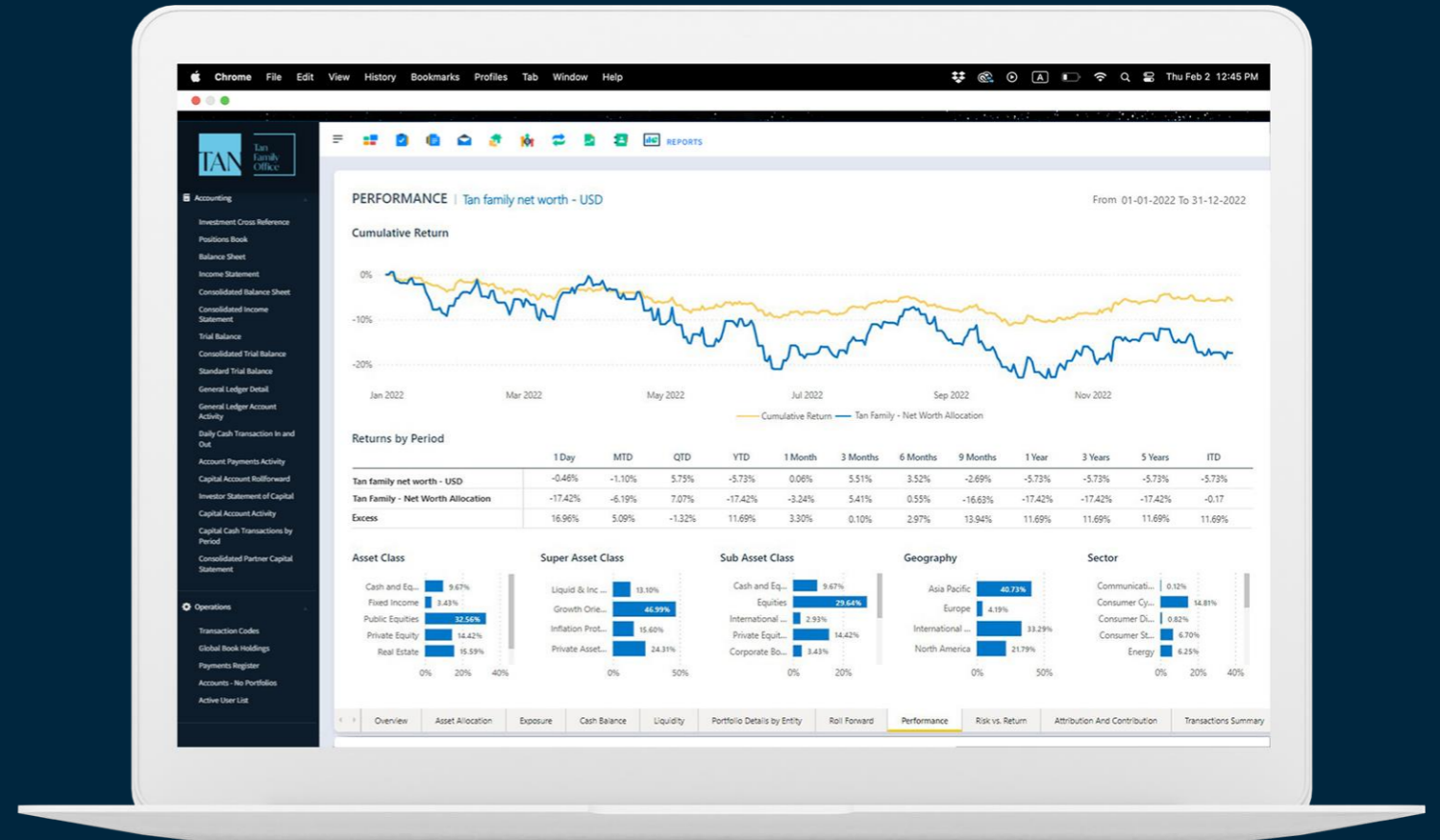
Investment objectives

Establish family-specific investment objectives and track portfolio targets to actuals



Regulatory compliance

Meet all of your regulatory reporting needs



02

Get full control at your fingertips

Initiate, authorize and manage all tasks and operations



User permissions and digital audit trails

Manage dynamic permissions for document types, workflow activities, data set-up, transaction approvals, and view all activities through digital audit trail



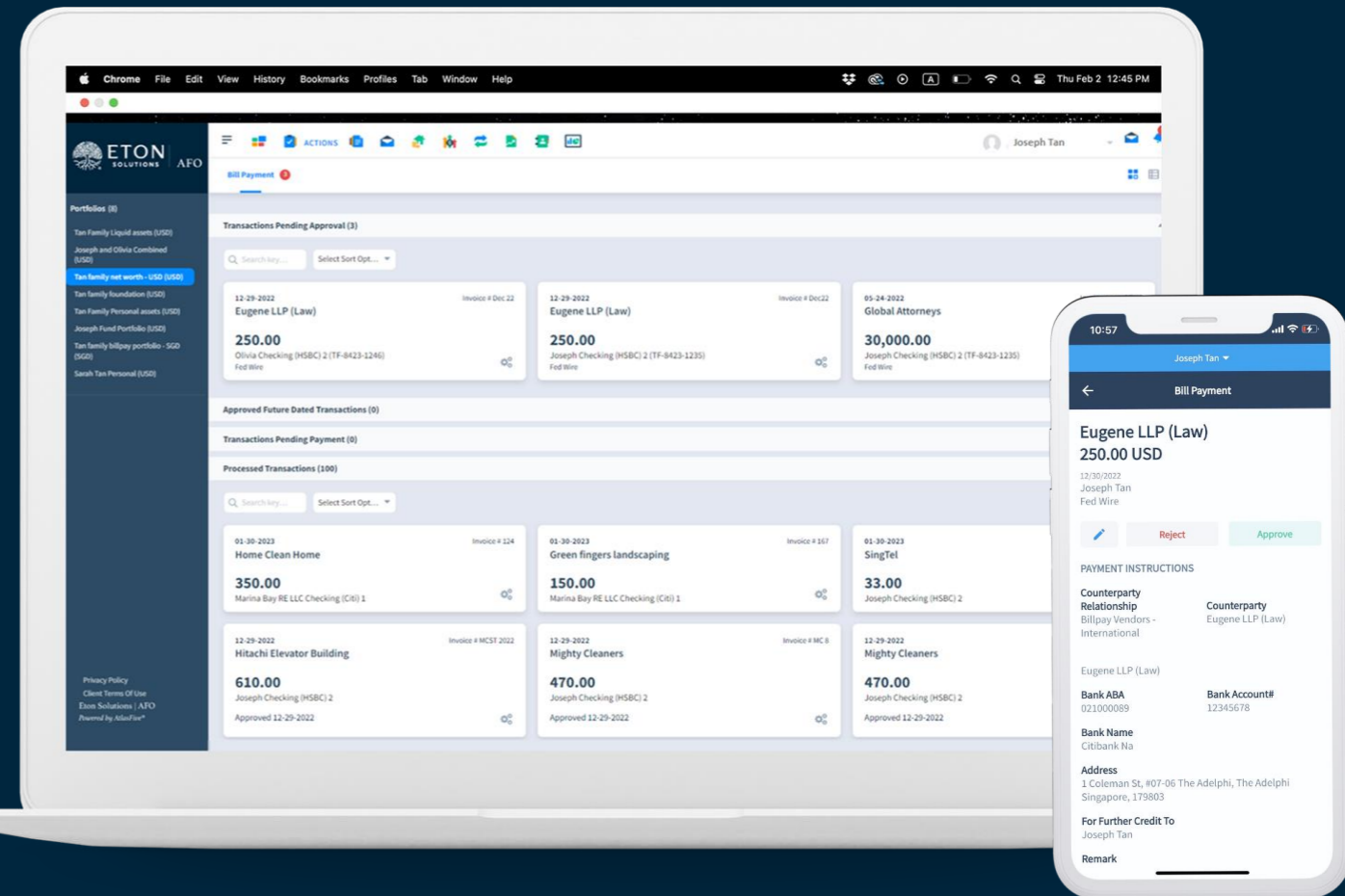
Secure document hub

Store and securely share private documents with third-party vendors and partners on a single platform



Control on-the-go

Enforce structural controls with dynamic workflows and approve transactions from anywhere



03

Gain total visibility & risk management

Capture family net worth for risk management and seize market opportunities



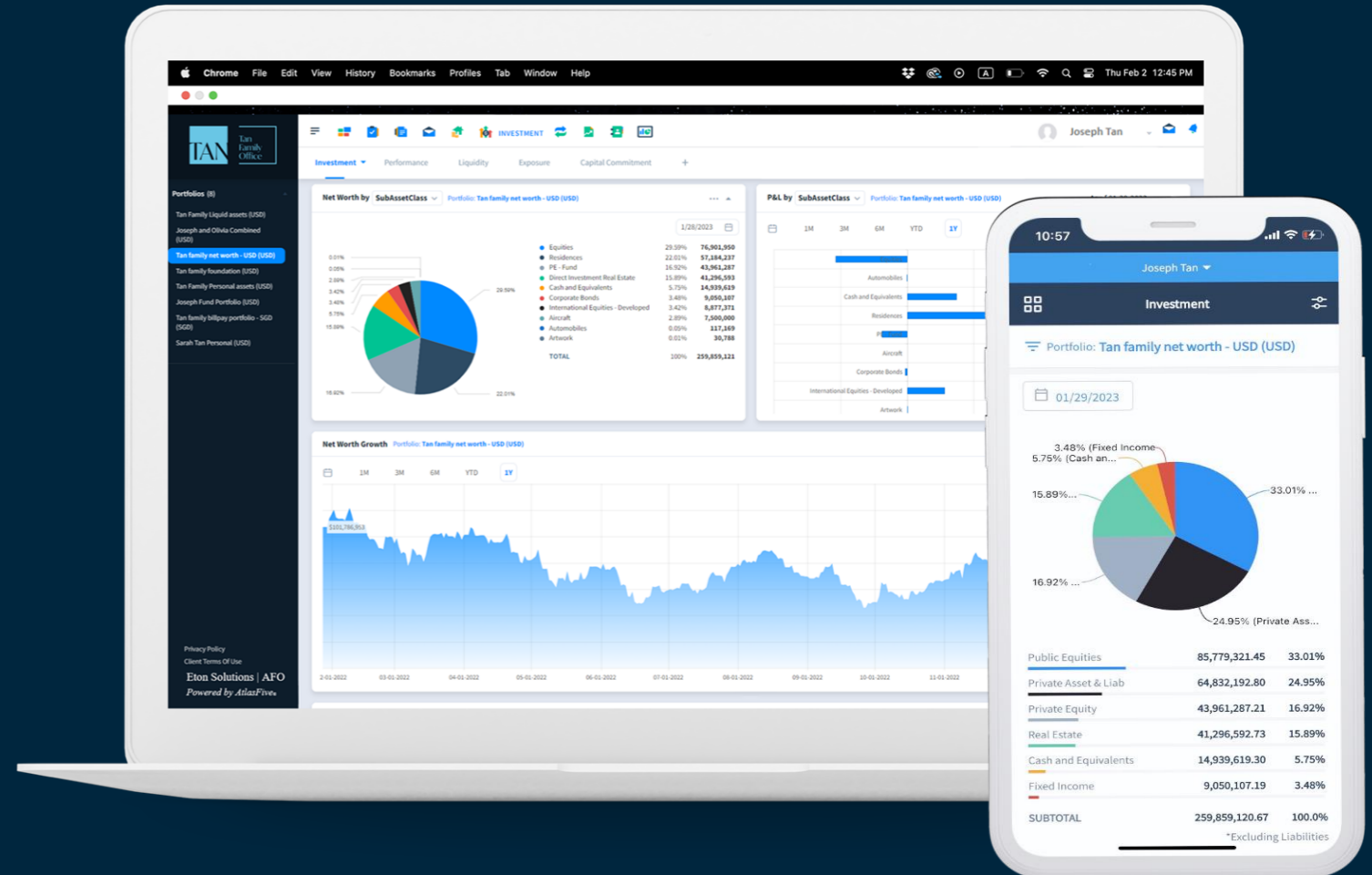
Holistic view of your portfolio

Get a holistic view of total assets across entities with a bird's-eye view down to the granular details



Performance management

Understand portfolio performance and measure decision impact by benchmarking against industry standards and custom criteria



04

Manage complex investments seamlessly

Simplify the entire Private Equity Lifecycle



End-to-end management of Private Equity


Simplify the PE lifecycle by initiating capital calls, authorizing payments, and updating capital commitment schedule on the platform



Advanced cash flow analysis and reporting

Visualize historical and projected private equity cash flows for ensuring liquidity for upcoming capital calls

Capital Commitments Portfolio: **Tan family net worth - USD (USD)**

01-28-2023  Show All

Drag a column header and drop it here to group by that column

Entity	Fund Description	Vintage	Commitment Date	Original Commitment Amount	Last Cash Transaction Date
Joseph Tan	Blackstone Distressed Opportunity III		04-24-2020	\$2,223,402.55	05-19-2022
Joseph Tan	KKR Americas XI	2017	01-01-2018	\$7,875,000.00	06-13-2022
Joseph Tan	KKR European Fund V	2019	05-04-2020	\$5,985,000.00	06-15-2022
Joseph Tan	KKR Asian Fund III	2017	03-02-2020	\$6,300,000.00	04-29-2022
Joseph Tan	Blackstone Emerging Opportunity IV	2015	03-05-2020	\$3,862,495.17	06-15-2022
Joseph Tan	Blackstone Growth Opportunity III	2014	12-23-2019	\$3,907,852.80	06-11-2022

Capital Commitment Detail

Joseph Tan

KKR Asian Fund III
 6,300,000.00 USD
 Remaining Commitment: (1,995,000.00 USD)

DETAILS

Entity Joseph Tan **Vintage** 2017

Account Joseph Advisory ANH (USD)

Super Asset Class Growth Oriented **Asset Class** Private Equity

Sub Asset Class PE - Fund **Investment Group** Alternative Investments

Last Cash Transaction Date 04/29/2022 **Capital Investment** 4,305,000.00 USD

Adjustments to Remaining Commitment 1,995,000.00 USD

Distribution **Market Value** 18,006,561.51 USD

Price Date **Investment Multiple**

05

Keep track of all your private assets

Centrally manage your private assets wherever you are



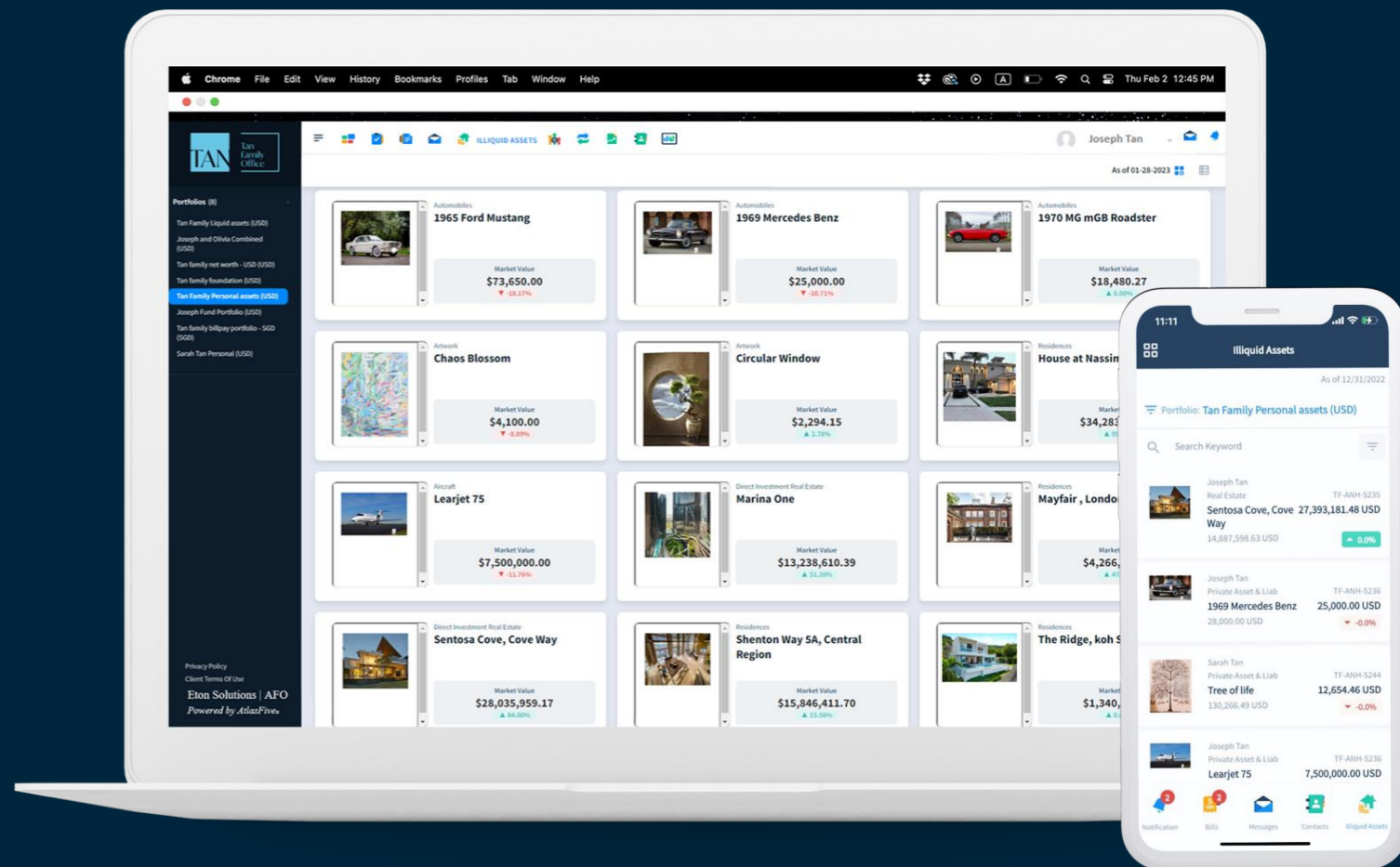
Centrally managing all your private assets

View your entire collection of watches, art, real estate, wine, etc. with location tags and descriptions on the platform



Visualisation and Reporting

Add your assets to your total net worth and monitor changes in the underlying asset value through dashboards and reports



06

Have a high quality, accurate, and secure data infrastructure

Remove manual data management efforts and simplify your data operations



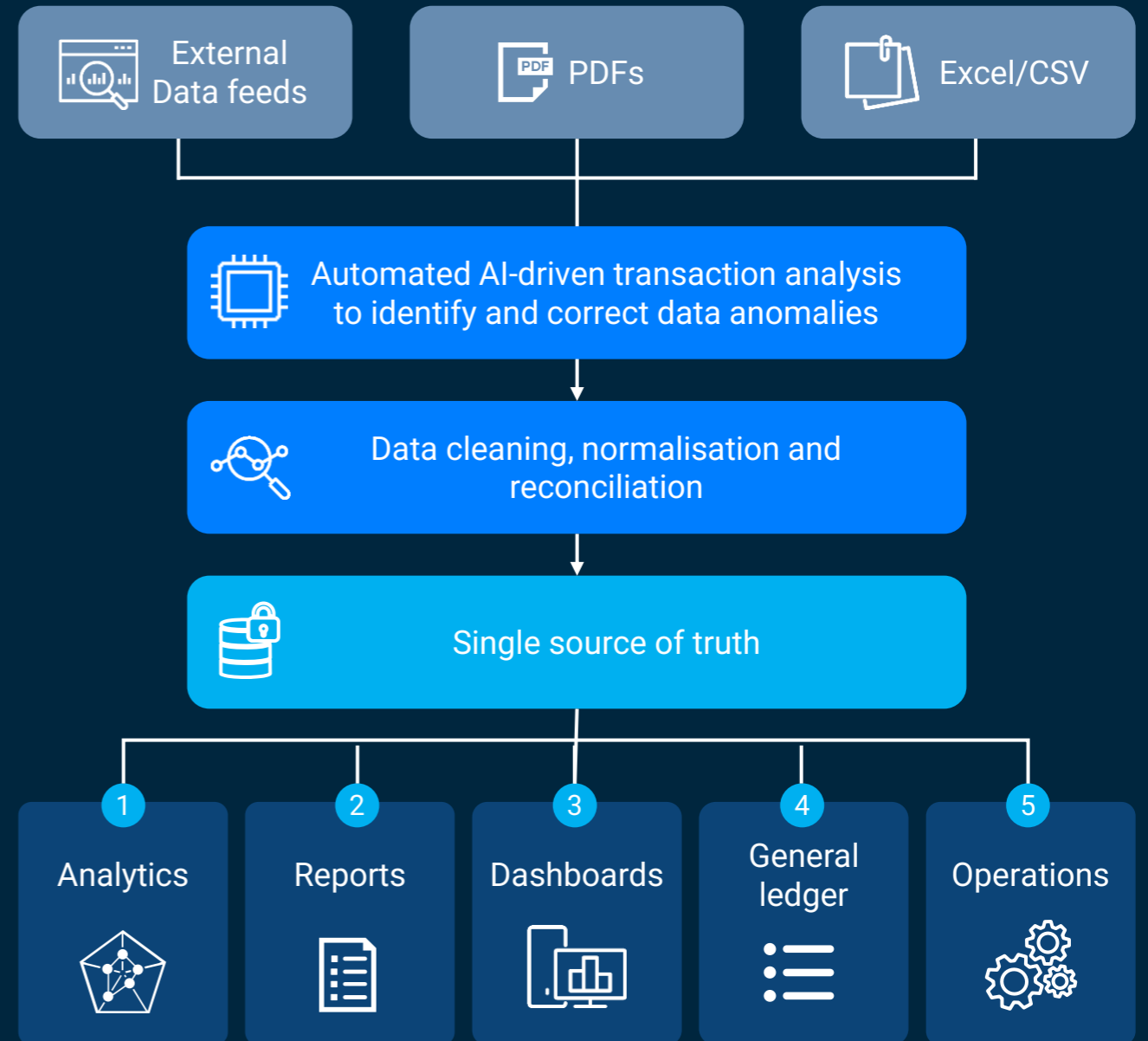
Integrated data in secure infrastructure

Automate data feeds across banks and custodians to unify and secure all data on one platform for all needs



Streamline data operations

Automate AI-driven transaction analysis to detect and fix anomalies and inconsistencies, leaving you with accurate and clean data





Secure to the core

Encrypt everything
Verify everything
Monitor everything
within a **Secure application** and
a **Secure Infrastructure**

We protect your data
through world class
Microsoft Azure
security infrastructure



Industry Certifications

Best-in class certifications (SOC2, ISO and OSPAR) and **external auditors' validation**



Data Encryption

Fully **encrypted** data (in transit and at rest) with **entity-level visibility** stored locally in **Singapore**



24/7 Monitoring

24/7 Security Operations Centre to detect and manage cybersecurity events



Azure Native

Leverages **Microsoft's** leading expertise on **cybersecurity**



Security First

Security testing at **every stage**, from software **development** to **deployment** and beyond



User Identity

Single Sign-on and **Multi Factor Authentication** using **Azure Active Directory**

Eton Solutions AFO Fit-For-Purpose Collaboration Model

AFO

One solution to run your family office in an efficient manner

Liquid and illiquid data aggregation



Core accounting and reporting



Transaction processing



Dashboards and workflows



Mobile app



Virtual mailroom



Performance benchmarking

Private assets tracking

Bespoke analytics and reporting

Private Equity lifecycle

Cashflow Analysis & Reporting

Eton Solutions AFO Fit-For-Purpose Collaboration Model

AFO

One solution to run your family office in an efficient manner

AFO Power

Performance-driven investment reporting for growth

Liquid and illiquid data aggregation



Core accounting and reporting



Transaction processing



Dashboards and workflows



Mobile app



Virtual mailroom



Performance benchmarking



Private assets tracking



Bespoke analytics and reporting



Private Equity lifecycle

Cashflow Analysis & Reporting

Eton Solutions AFO Fit-For-Purpose Collaboration Model

AFO

One solution to run your family office in an efficient manner

AFO Power

Performance-driven investment reporting for growth

AFO Professional

Professional-grade wealth solution for complex investments

Liquid and illiquid data aggregation



Core accounting and reporting



Transaction processing



Dashboards and workflows



Mobile app



Virtual mailroom



Performance benchmarking



Private assets tracking



Bespoke analytics and reporting



Private Equity lifecycle



Cashflow Analysis & Reporting



We also offer add-on specialist services to cater to your unique needs

CUSTOMISED BRANDING



Customised logos shown on your client portal, mobile app and all your reports

FUND & TRUST ACCOUNTING



Trust setup & maintenance, fund setup & implementation, fund allocation reports, trust statement of assets, trust activity report, ...

TAX SUPPORT SERVICES



Consolidation of documents for tax support, income report and reconciliation, tax cost roll forward reports, tax analyst, ...

PRIVATE LOANS & OTHERS



Loan and receivables management, creation and maintenance of bespoke portfolio benchmarks, ad-hoc customised reporting

Eton AFO brings cost savings & operational efficiencies with fit-for-purpose packages at a fractional cost

Your Digital Family Office Powered By AtlasFive®

*~30-40% cost savings
(~450 – 600k p.a. typical in Eton's 250M AuM client)*

*Operational excellence
in day-to-day management*

Annual All-in Fee From

US \$85,000



Reduce Vendor Costs



Costs of Data Aggregation & Reporting



Streamline Staffing and Hiring



Quality and real-time data



Speed of response to market



Regulatory & tax compliance



Focus on strategic activities

Our Offerings For All Your Needs

AFO

AFO Power

AFO Professional

Our dedicated AFO Management Team serves out of Singapore to best deliver impact at pace

Client Service Engagement



Bryan Henning

**Senior Vice President,
Head of International**
Financial services expert with 25 years in Wealth Mgmt/Private Banking. Singapore PR



Tracie Soh

**Vice President, Marketing
and Client Engagement**
Marketing professional with over 17 years of APAC experience in finance, insurance and private banks



Ronan Goh

**Client Service
Manager**
10 years of middle-office and front-office experience in the banking sector

Service Team



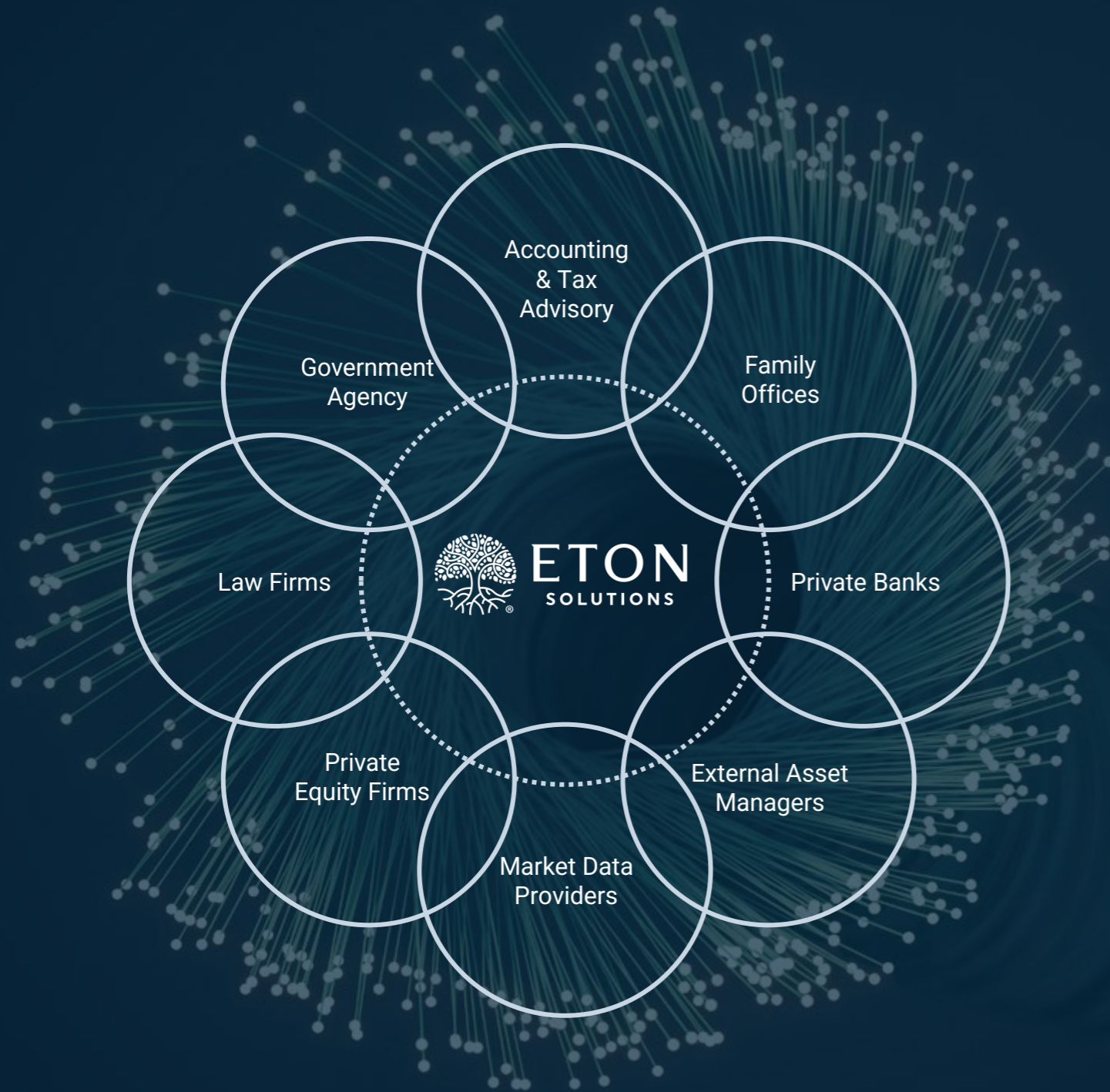
Nimish Soni

**Head of Administrative
Family Office**
Over 25 years as an entrepreneur and in senior executive roles at listed companies across the world



Srikrishna Madhavan

Chief Financial Officer
Over 20 years in leading finance & businesses across Global outsourcing



Eton is committed to building an **inclusive marketplace** to help our partners **enrich and elevate** their service to family office clients

Your digital family office powered by AtlasFive®

Privacy | Security | Control

