

Globalization 4.0
World is on the move

HP Henley & Partners

Contents

1. Global Migration Trend
2. HNWIs Going Global
3. Current development in residence and citizenship programs
4. Henley & Partners -Comprehensive Advisory Process
5. Selected Henley & Partners Government Advisory Milestones

Global Migration Trend

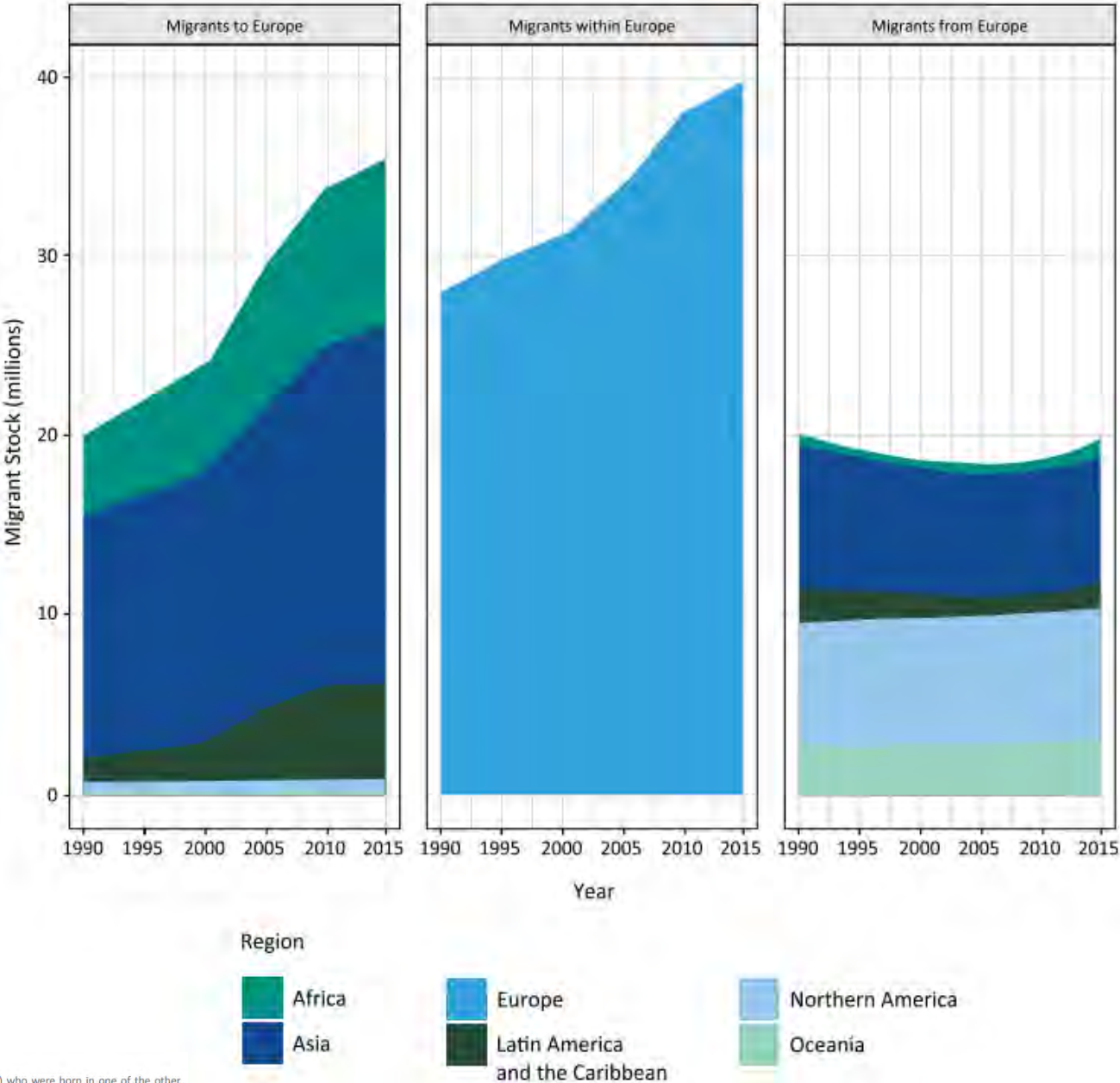
Year	Number of migrants	Migrants as a % of world's population
1970	84,460,125	2.3%
1975	90,368,010	2.2%
1980	101,983,149	2.3%
1985	113,206,691	2.3%
1990	152,563,212	2.9%
1995	160,801,752	2.8%
2000	172,703,309	2.8%
2005	191,269,100	2.9%
2010	221,714,243	3.2%
2015	243,700,236	3.3%

International migrants – 1970-2015

Source: UN DESA, 2008 and 2015a.

Note: The number of entities (such as States, territories and administrative regions) for which data were made available in the 2015 UN DESA *Revision of International Migrant Stock* was 213. In 1970, the number of entities was 135.

Migrants to Europe, within Europe and from Europe between 1990 and 2015

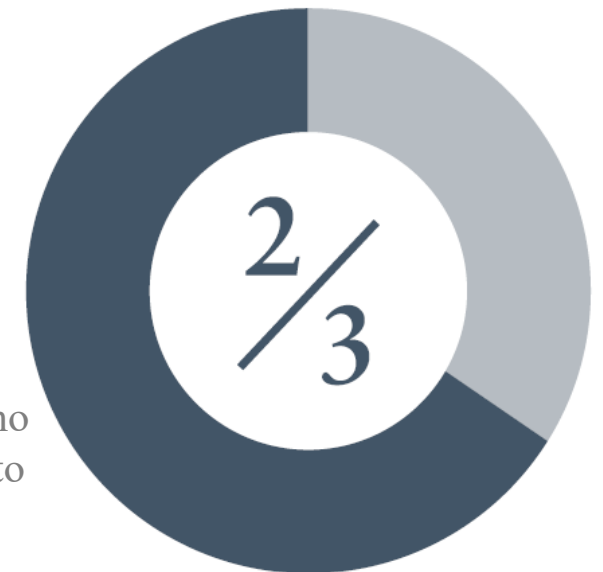


Source: UN DESA, 2015a.
 Note: "Migrants to Europe" refers to migrants residing in the region (i.e. Europe) who were born in one of the other regions (e.g. Africa or Asia). "Migrants within Europe" refers to migrants born in the region (i.e. Europe) and residing outside their country of birth, but still within the European region. "Migrants from Europe" refers to people born in Europe who were residing outside the region (e.g. in Latin America and the Caribbean or Northern America).

HNWIs Going Global



Number of HNWIs migrating per year



The percentage of UHNWIs who hold a second passport or plan to obtain one

Sources:

Capgemini. 2018. *World Wealth Report 2018*.

Karlgaard, Rich. 2009. 'Wriston's Law Still Holds'. *Forbes*. 6 August 2009.

Knight Frank Research. 2018. *The Wealth Report: The Global Perspective on Prime Property and Investment*. 12th Edition.

New World Wealth. 2018. *Global Wealth Migration Review*.

Wealth-X. 2018. *The World Ultra Wealth Report 2018*.

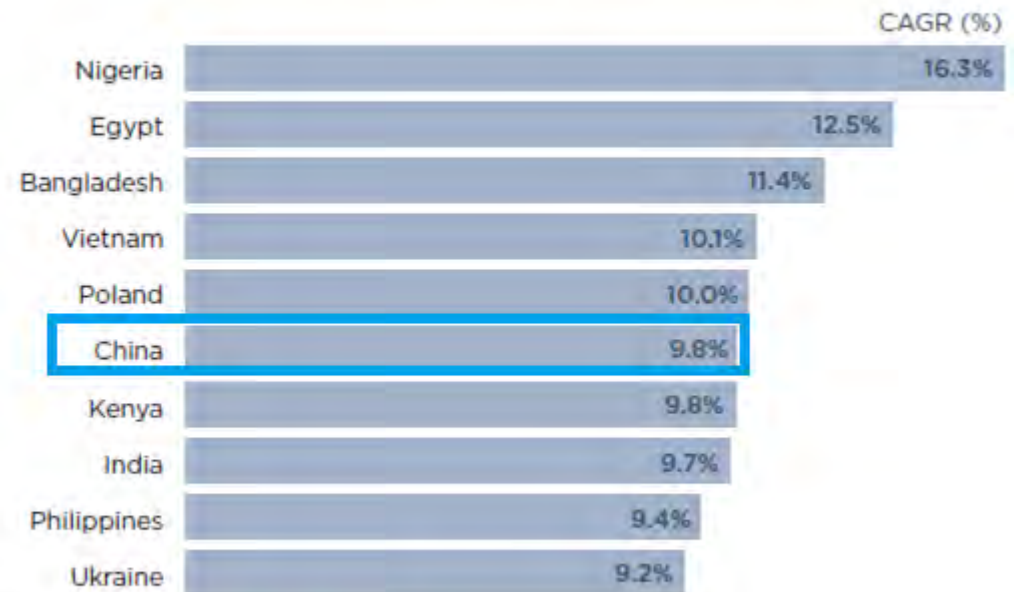
Top 10 HNW Countries

Rank	Country	Population		Wealth	
		2018 population	Year-on-year change	2018 wealth (\$bn)	Year-on-year change
1	United States	8,676,985	2.3%	22,683	2.3%
2	China	1,880,215	3.9%	4,989	3.9%
3	Japan	1,618,670	1.3%	4,394	1.3%
4	Germany	1,022,625	4.9%	3,010	4.9%
5	United Kingdom	893,905	1.5%	2,426	1.5%
6	France	877,380	4.7%	2,449	4.6%
7	Canada	505,010	-1.1%	1,597	-1.1%
8	South Korea	476,705	-1.2%	1,313	-1.2%
9	Australia	473,600	-2.3%	1,160	-2.2%
10	Italy	418,090	6.2%	1,219	6.2%

Note: Population numbers are rounded to the nearest 5. Annual changes are measured based on model inputs updated retrospectively and not on previously published figures. For further information about our wealth and investable assets model, please see the Methodology section.

Source: Wealth-X

TOP 10 FASTEST-GROWING HNW COUNTRIES (2018-2023)



CAGR stands for compound annual growth rate.

Source: Wealth-X

Most popular destination for Chinese HNWI in term of Migration

1	USA	79.3%
2	Canada	24.6%
3	Australia	14.8%
4	UK	10.8%
5	Ireland	7.9%
6	New Zealand	6.4%
7	Singapore	4.4%
8	Malta	3.9%
9	Japan	2.5%
10	Greece	2.0%
10	Hong Kong	2.0%
12	Spain	1.5%
13	Portugal	1.0%
13	France	1.0%

Sources:
Huran Reprot 2018

Reasons for an alternative Residence or Citizenship





Current Development



Residence-by-Investment Programs

Henley & Partners handpicks the most attractive countries with regard to mobility, security, privacy, personal tax, and lifestyle.

Australia

Hong Kong

Singapore

Austria

Malaysia

Switzerland

Canada

Malta

Thailand

Channel Islands

Monaco

UK

Cyprus

New Zealand

US

Greece

Portugal

Citizenship-by-Investment Programs

There are currently only nine countries which offer citizenship programs that provide a direct legal route to citizenship based on capital contribution and which have passed *Henley & Partners'* country due diligence

Antigua & Barbuda

Malta

Austria

Moldova

Cyprus

St. Lucia

Grenada

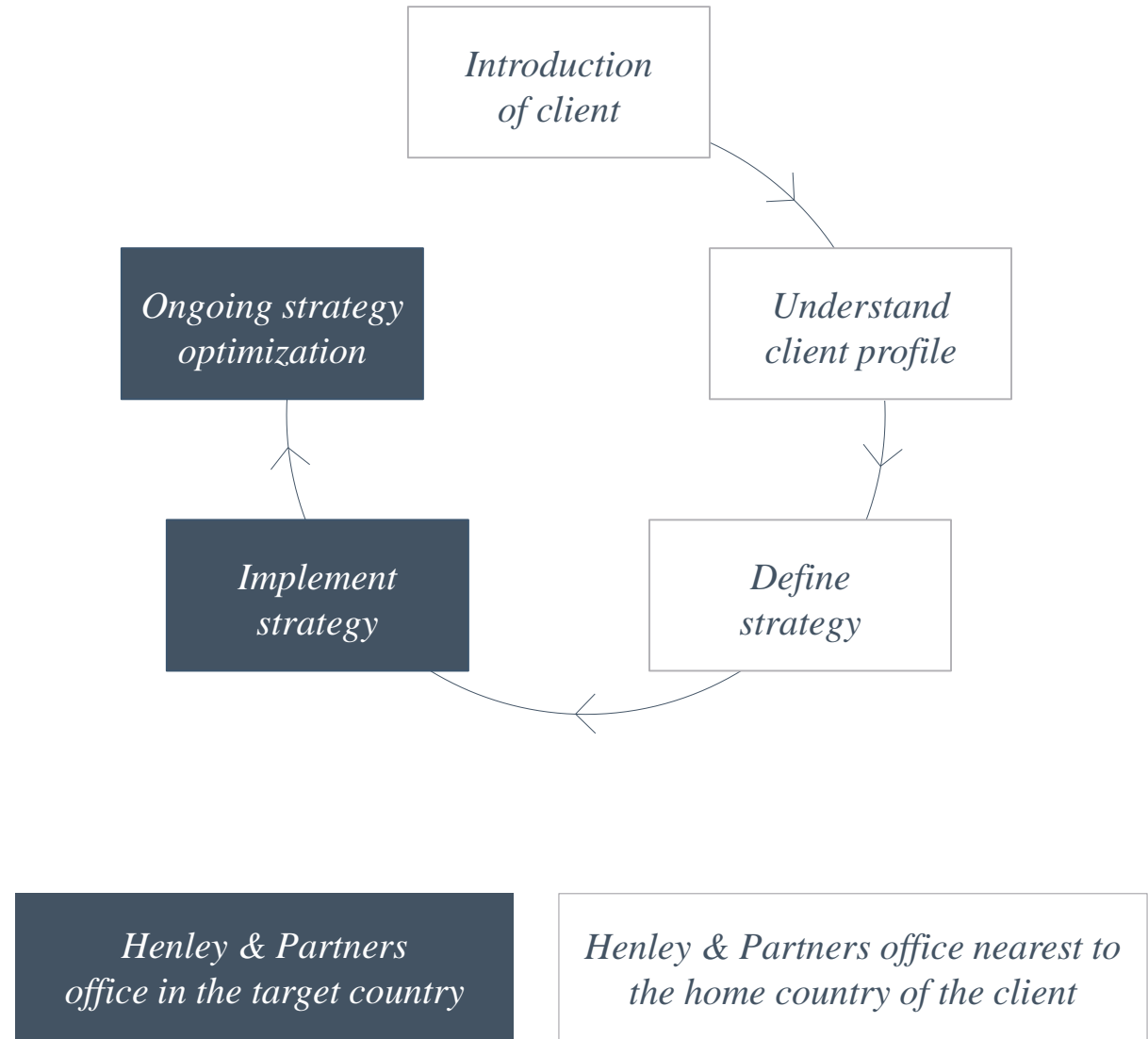
St. Kitts & Nevis

Other countries have similar provisions. However, in those countries there is no established or clear practice and/or the programs are not transparent

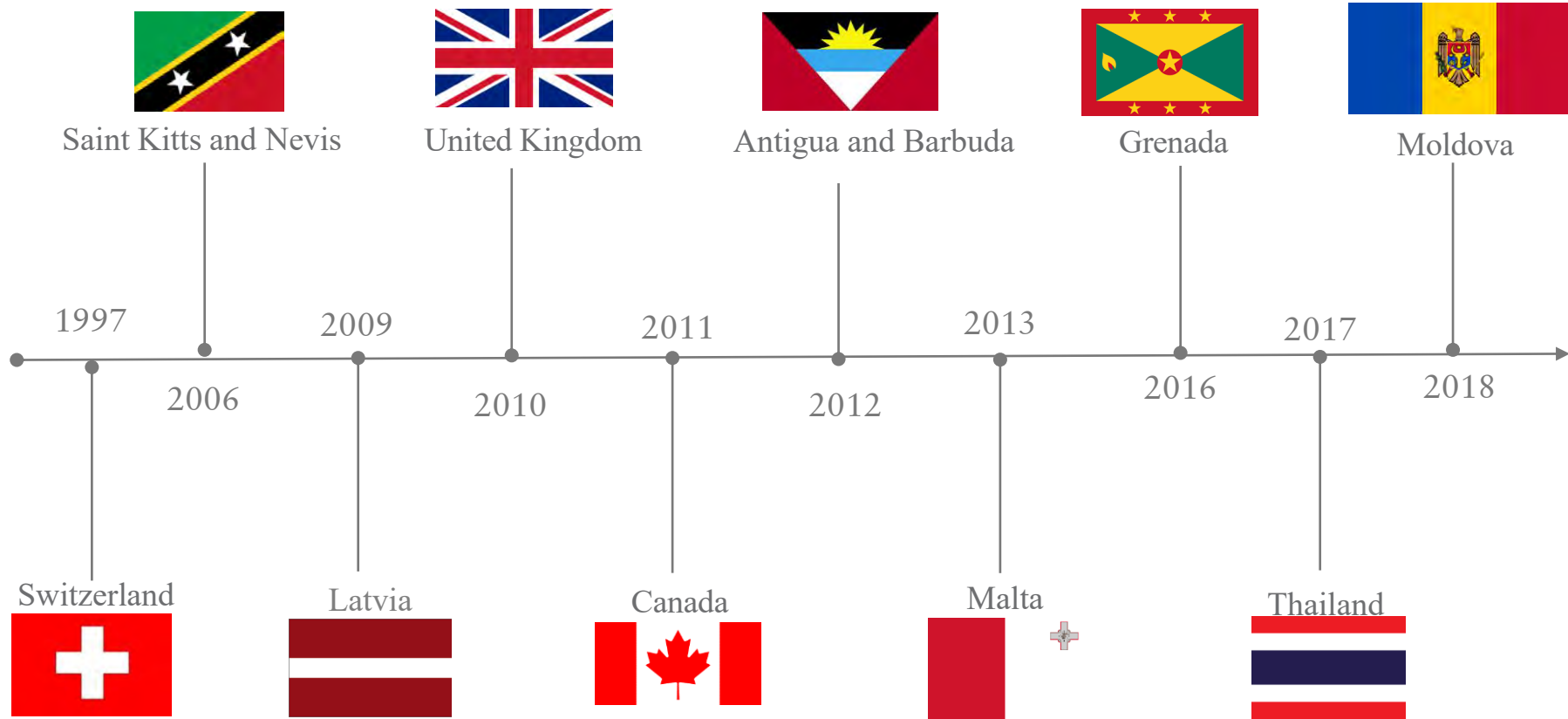
Henley & Partners -Comprehensive Advisory Process

Focus:

- Develop a medium to long-term residence and/or citizenship strategy
- Provide a fully-managed process for busy people
- Implement and manage all administrative tasks when able. Fly to visit, meet at their office or home
- Procure the desired citizenship and/or citizenship



Selected Henley & Partners Government Advisory Milestones



Jennifer Lai
Managing Partner- Head of North Asia

Henley & Partners Hong Kong Ltd.
Room E, 29/F, Tower 1, Admiralty Centre
No. 18 Harcourt Road, Admiralty
Hong Kong

Telephone +852 3101 4100
Facsimile +852 3101 4101

Jennifer.lai@henleyglobal.com